



MONTACARGAS REMMOSA SA DE CV

Site:

Vía Jose Lopez Portillo Km. 29.5,
San Lorenzo Tetliltac, C.P. 55714, Coacalco,
Edo. Méx.

Phone: 55 2600 2960

ventas@montacargas-hangcha.com
www.montacargas-hangcha.com



2023 VERSION 4/COPYRIGHT 2023

HANGCHA GROUP CO., LTD. reserves the right to make any changes without notice concerning colors, equipment, or specifications detailed in this brochure, or to discontinue individual models. The colors of trucks, delivered may differ slightly from those in brochures.

XE Series Electric Pneumatic Forklift With Lithium-ion Technology

with capacity of 4,000 to 7,600lbs

HANGCHA Lithium-ion

Re-imagining **POWER**



Making Material Handling Easier
SINCE 1956

XE SERIES ELECTRIC LITHIUM-ION PNEUMATIC FORKLIFT

The XE Series Electric Lithium-ion Pneumatic Forklift is a newly designed lithium-ion forklift from Hangcha Group. This dedicated lithium-ion powered forklift features an 80V system with a permanent magnet synchronous motor for increased efficiency. The dedicated chassis also allows for a larger, more ergonomic operator compartment. The XE Series is unique as it shares key design features with a similar I.C. powered forklift. These include larger tires, a higher ground clearance, and waterproofing. This combined with forklift's overall performance, reliability, and load capacity, allows the XE Series to successfully work in the same heavy-duty applications that internal combustion forklifts are typically found in.

XE SERIES DESIGN & COMPARISON

Design

The new XE Series Electric Lithium-ion Pneumatic Forklift is designed to share several I.C. pneumatic forklift characteristics while still providing the benefits of a dedicated lithium-ion electric forklift. This design allows the XE Series to successfully take on both indoor and outdoor operational environments that I.C. pneumatic forklifts are typically found in.

- / The XE Series has tires that are the same size as an I.C. powered forklift.
- / The forklift is designed with the same reliable steering axles that are found in Hangcha's I.C. powered forklifts.
- / The forklift's ground clearance is similar to an I.C. forklift so that it can handle the same outdoor environments as an I.C. powered forklift.
- / The turning radius allows for flexibility when shuttling in indoor environments such as cold storage facilities.
- / The battery is equipped, standard, with an electric heating module to ensure normal operation in cold weather.
- / The XE Series has an IPX4 rating to ensure operational ability through waterlogged roads and in the rain.

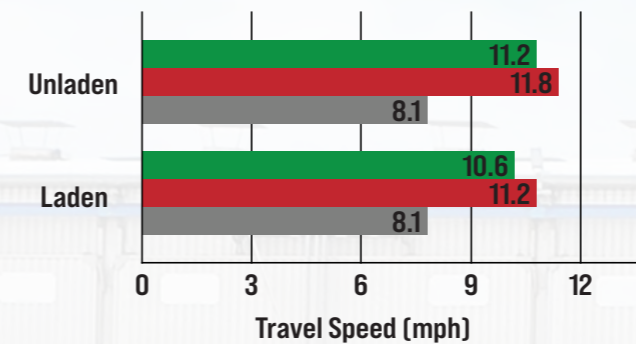


Tight Turning Radius

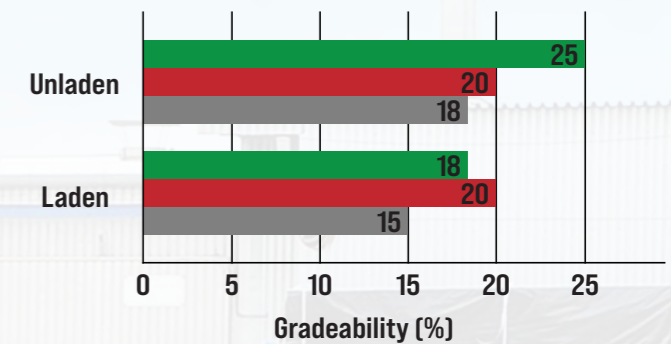


XE Series Comparison

Maximum Travel Speed Comparison



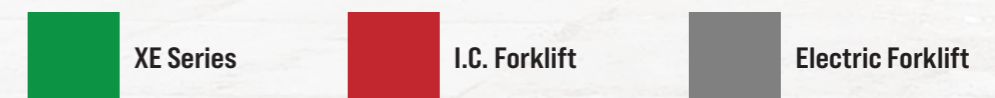
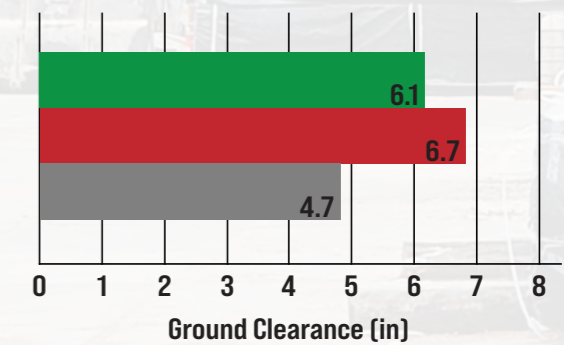
Gradeability Comparison



Maximum Lifting Speed Comparison



Ground Clearance Comparison



APPEARANCE

The XE Series Electric Lithium-ion Pneumatic Forklift is designed to take on both indoor and outdoor activities while still maintaining a lifting capacity of up to 7,600lbs. Thanks to its larger tires and ground clearance, it is designed to take on the same operational environments that an I.C. powered forklift operates in. The exterior of this electric forklift is powder coated in a durable, easy to see, green finish that designates it as lithium-ion powered.



COMFORTABLE OPERATION

In developing the XE Series Electric Lithium-ion Pneumatic Forklift, ergonomic design, comfort, and ease of operation were carefully considered. This is because comfortable operating environments contribute to increased productivity among operators.

Ergonomic Design

- / Designed as a dedicated lithium-ion powered forklift, allows for a larger operator compartment that is more ergonomic and comfortable. It also gives operators a wide view of their surroundings.
- / The large LCD colored display allows operators to clearly see the status of the forklift. They can also easily change the forklift's settings thanks to the intuitive controls of the display.
- / The adjustable steering wheel and seat position allow for operators to find their ideal operating position.
- / The large brake pedal and regenerative braking function effectively reduce operator fatigue to allow them to work longer.
- / The forklift can also be equipped with an optional electronic handbrake to allow for more comfortable operation.



The ergonomically designed operator compartment allows the operator to have a wide field of vision.

ENERGY SAVING & EFFICIENT

Designed around an 80V system and double magnet synchronous motor, the XE Series Electric Lithium-ion Forklift provides users with an energy-saving and efficient alternative to similarly spec'd I.C. powered forklifts.

- / The XE Series features an efficient high-torque electric motor and a high speed ratio gearbox to significantly improve the forklift's travel speed, gradability, and lifting speed.
- / The travel and lift motors feature a built-in air-cooled fan to increase the motors' performance and reliability.
- / For the first time, reducers are built into the hydraulic pump. This allows the lift motor to save energy and work more efficiently.
- / The 80V double permanent magnet synchronous motor system allows higher power density. Combined with the rest of the 80V system, including the gearbox, motors, and electronic controls, the forklift is able to reduce energy consumption by 15% to 20% when compared to a traditional asynchronous motor model in the same working conditions.

RELIABLE

Hangcha designed the XE Series Electric Lithium-ion Pneumatic Forklift to be reliable. By using key components, specific designs, and testing to the standards of both electric forklifts and I.C. forklifts, Hangcha is able to build a reliable forklift that operators can count on.

- / The drive axle, gearbox, mast, steering axles with tapered roller bearings (6,000-7,600lb models), and large tires are designed to meet the demand required in heavy-duty working conditions.
- / The XE Series is designed with a low center of gravity and high load margins to increase stability.
- / The XE Series Electric Lithium-ion Pneumatic Forklift is designed and tested to both electric and internal combustion forklift standards. This proven, rugged design allows the XE Series to reliably handle the same operational environments as both I.C. and electric forklifts.



1 Large Tire Size

The XE Series uses the same tire size as a similar sized I.C. powered forklift. By using the same tire size, the XE Series is able to maneuver in the same outdoor applications as an I.C. powered forklift.

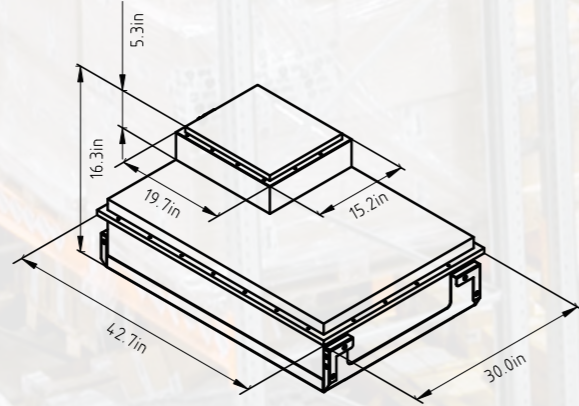
2 Great Ground Clearance

The XE Series is designed to have close to the amount of ground clearance as a similar sized I.C. powered forklift. This allows the XE Series to maneuver in the same outdoor applications as a similar I.C. powered forklift.

LITHIUM-ION POWER

Lithium Iron Phosphate Battery Packs

- / Integrated Battery Management System (BMS) continually monitors energy management and ensures reliable operation.
- / HANGCHA provides these Lithium Iron Phosphate (LiFePO₄) battery packs with up to a 5 year or 10,000 hour warranty.
- / See warranty certificate for specific warranty information on the Lithium Iron Phosphate battery packs.



XE Series Electric Lithium-ion Pneumatic Forklift Lithium-ion Battery Capacity			
Load Capacity (lb)	Standard Battery (V/Ah) (kW-h)	Optional Batteries (V/Ah) (kW-h)	
4,000-5,000lbs	80V/230Ah 18.40kW-h	80V/304Ah 24.32kW-h	80V/460Ah 36.80kW-h
6,000-7,600lbs	80V/304Ah 24.32kW-h	80V/460Ah 36.80kW-h	80V/608Ah 48.64kW-h

XE Series Electric Lithium-ion Pneumatic Forklift Lithium-ion Battery Running Times			
Load Capacity (lb)	Standard Battery Running Time (hour)	Optional Batteries Running Time (hour)	
4,000-5,000lbs	5.4 hours	7.1 hours	10.8 hours
6,000-7,600lbs	5.5 hours	8.2 hours	11 hours

*Run time will be dependent on customer application and use.

Easy Access Charging Port

The newly designed forklift features an easy access charging port on the right side of the forklift to provide operators with a convenient way to charge the forklift.



Maintenance-Free Battery Pack

The forklift features a Lithium Iron Phosphate (LiFePO₄) battery pack doesn't require any regular maintenance performed on the battery pack.



Charging Times

The XE Series Electric Lithium-ion Forklift can charge in less than 2 hours when combined with Hangcha's three-phase, single gun charger and the smaller capacity battery packs. Larger battery packs can take up to 3 hours.

STANDARD CONFIGURATION

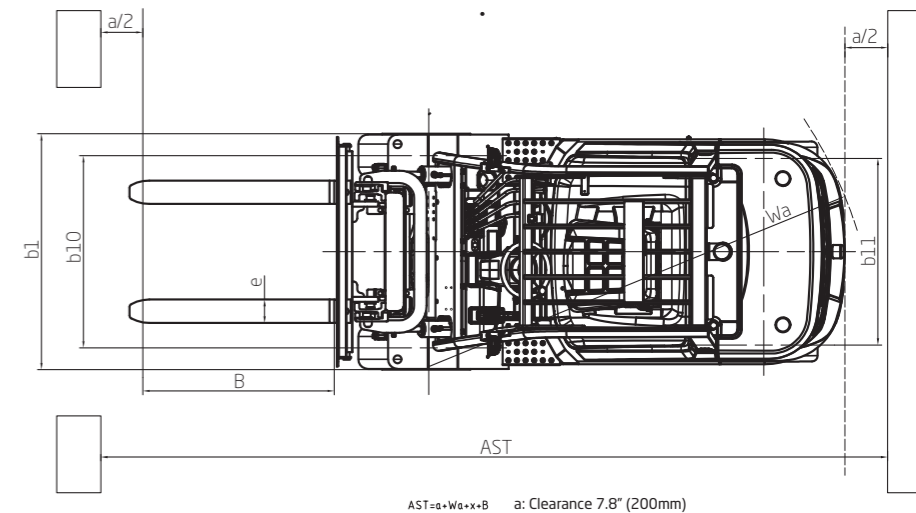
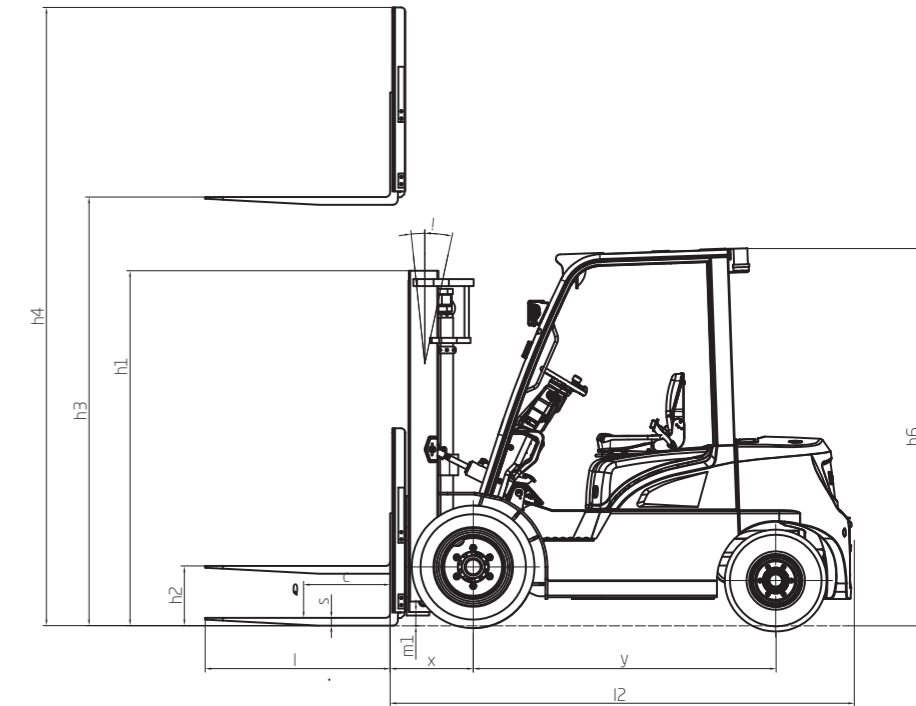
- | | | | |
|--|---|---|---------------------------------------|
| / Limited Free-Lift 2 Stage Mast | / Pneumatic Tires | / Mechanical Parking Handbrake | / 80V Double Magnet Synchronous Motor |
| / Soft Landing System | / Dual Hydraulic Multiway Valves | / Multi-Function Instrument Cluster | / Hydraulic Pump Reducer |
| / Standard Forks | / LED Combination Headlights & Taillights | / SPE Power Selection | / Stamped Hood with Gas Shocks |
| / Lithium-ion Battery Pack | / Horn | / Stamped Iron Side Plates | / DC-DC Converter |
| / Operator Presence Sensing System (OPS) | / Reverse Alarm | / Stamped Stainless Steel Boarding Step | / Large Integral Rubber Pedal Pad |
| / Strobe Light | / Emergency Cut-Off Switch | / Panoramic Rear View Mirror | / Tow Pin |
| / Easy-Access Charging Port | / Integrated Fuse Box | | |

OPTIONS

- | | | | |
|------------------------------------|--|---|---------------------------------|
| / Custom Colors | / Various Optional Attachments | / Larger Capacity Lithium-ion Battery Packs | / 12V Power Outlet |
| / Freezer Package | / Dual Pneumatic Tires | / Front/Rear Blue Lights | / USB Port |
| / Lift Buffering System | / Single or Dual Solid Pneumatic Tires | / Rear Working Lights | / Pin Code or Card Access |
| / Full-Free Lift 2 Stage Mast | / Triple Hydraulic Multiway Valves | / Rear Reverse Grip with Horn Button | / Front Windshield |
| / Full-Free Lift 3 Stage Mast | / Quadruple Hydraulic Multiway Valves | / Fire Extinguisher | / Rain Gaurd |
| / Widened/Heightened Load Backrest | / Quintuple Hydraulic Multiway Valves | / Electronic Parking Handbrake | / Full Cabin |
| / Widened Fork Carriage | / Telematics | / Integrated Fingertip Control System | / Operator Fan |
| / Integral Side Shifter | | | / Left & Right Rearview Mirrors |
| / Various Fork Lengths | | | / Full Suspension Seat |
| | | | / Semi Suspension Seat |

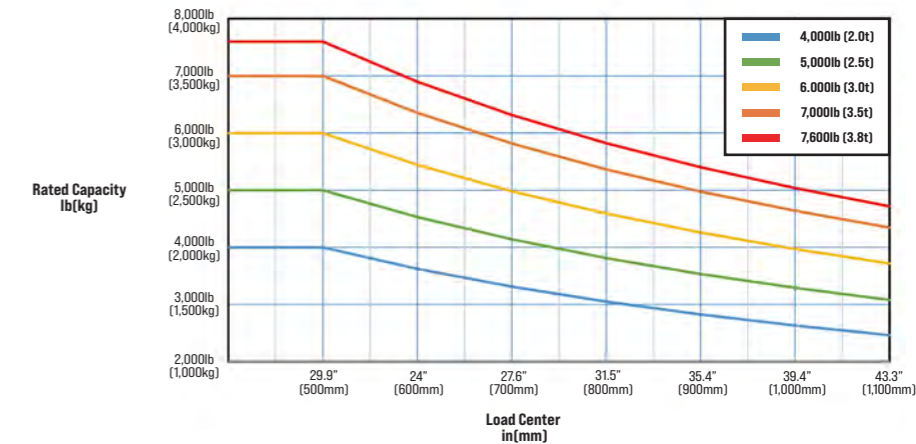
XE Series Electric Lithium-ion Pneumatic Forklift 4,000-7,600lb Specification

Distinguishing Marks	1.1	Manufacturer	HANGCHA GROUP CO.,LTD.					
		1.1	HCFA Model	FBE20Li	FBE25Li	FBE30Li	FBE35Li	FBE38Li
	1.2	Manufacturer's Type Designation	CPD20-XEY2H-SI	CPD25-XEY2H-SI	CPD30-XEY2H-SI	CPD35-XEY2H-SI	CPD38-XEY2H-SI	
	1.3	Drive: electric (battery or mains), diesel, petrol, fuel gas	Electric	Electric	Electric	Electric	Electric	
	1.4	Operator Type: hand, pedestrian, standing, seated, order-picker	Seated	Seated	Seated	Seated	Seated	
	1.5	Rated Capacity/Rated Load	lb(kg)	4000 (1812)	5000 (2265)	6000 (2722)	7000 (3177)	7600 (3449)
	1.6	Load Centre Distance	c in(mm)	24 (600)	24 (600)	24 (600)	24 (600)	24 (600)
	1.8	Load Distance, centre of drive axle to fork	x in(mm)	18.2 (462.5)	18.2 (462.5)	18.8 (477.5)	19.0 (482.5)	19.0 (482.5)
	1.9	Wheelbase	y in(mm)	65 (1650)	65 (1650)	68.9 (1750)	68.9 (1750)	68.9 (1750)
Weight	2.1	Service Weight	lb(kg)	7705 (3495)	8565 (3885)	9502 (4310)	10340 (4690)	10847 (4920)
	2.2	Axle Loading, laden front/rear	lb(kg)	10450/1664 (4740/755)	12192/1885 (5530/885)	14043/2072 (6370/940)	15851/2205 (7190/1000)	16909/2315 (7670/1050)
	2.3	Axle Loading, unladen front/rear	lb(kg)	3461/4244 (1570/1925)	3527/5038 (1600/2285)	3792/5710 (1720/2590)	3902/6437 (1770/2920)	3946/6900 (1790/3130)
Tires & Chassis	3.1	Tires: solid rubber, superelastic, pneumatic, polyurethane		Pneumatic	Pneumatic	Pneumatic	Pneumatic	Pneumatic
	3.2	Tire size, front		7.00-12-12PR	7.00-12-12PR	28.9-15-14PR	28.9-15-14PR	28.9-15-14PR
	3.3	Tire size, rear		6.00-9-10PR	6.00-9-10PR	6.50-10-10PR	6.50-10-10PR	6.50-10-10PR
	3.5	Wheels, number front / rear (x = driven wheels)		2x/2	2x/2	2x/2	2x/2	2x/2
	3.6	Tread, front	b10 in(mm)	38 (965)	38 (965)	39.6 (1005)	39.6 (1005)	39.6 (1005)
	3.7	Tread, rear	b11 in(mm)	38.3 (973)	38.3 (973)	38.4 (975)	38.4 (975)	38.4 (975)
	Dimensions	4.1	Tilt of Mast/Fork Carriage Forward/Backward	a/b (°)	6/12	6/12	6/12	6/12
4.2		Height, mast lowered	h1 in(mm)	78.7 (1999)	78.7 (1999)	80.9 (2054)	85.4 (2169)	85.4 (2169)
4.3		Free Lift	h2 in(mm)	6.3 (160)	6.3 (160)	6.5 (165)	6.7 (170)	6.7 (170)
4.4		Lift	h3 in(mm)	118.1 (3000)	118.1 (3000)	118.1 (3000)	118.1 (3000)	118.1 (3000)
4.5		Height, mast extended	h4 in(mm)	159.3 (4046)	159.3 (4046)	163.2 (4145)	163.2 (4145)	163.2 (4145)
4.7		Height of Overhead Guard (cabin)	h6 in(mm)	85.2 (2165)	85.2 (2165)	85.8 (2180)	85.8 (2180)	85.8 (2180)
4.8		Seat Height/Stand Height	h7 in(mm)	43.7 (1111)	43.7 (1111)	44.3 (1126)	44.3 (1126)	44.3 (1126)
4.12		Coupling Height	h10 in(mm)	19.7 (500)	19.7 (500)	20.3 (515)	20.3 (515)	20.3 (515)
4.19		Overall Length	l1 in(mm)	140.6 (3570)	140.6 (3570)	147.0 (3735)	147.2 (3740)	147.2 (3740)
4.20		Length to Face of Forks	l2 in(mm)	98.4 (2500)	98.4 (2500)	104.9 (2665)	105.1 (2670)	105.1 (2670)
4.21		Overall Width	b1/b2 in(mm)	48.2 (1225)	48.2 (1225)	48.2 (1225)	48.2 (1225)	48.2 (1225)
4.22		Fork Dimensions	s / e / l in(mm)	1.6/4.8/42.1 (40/122/1070)	1.6/4.8/42.1 (40/122/1070)	1.8/4.8/42.1 (45/122/1070)	2/4.8/42.1 (50/122/1070)	2/4.8/42.1 (50/122/1070)
4.23		Fork Carriage ISO 2328, Class/Type A,B		ISO2328 2A	ISO2328 2A	ISO2328 3A	ISO2328 3A	ISO2328 3A
4.24		Fork-Carriage Width	b3 in(mm)	40.9 (1038)	40.9 (1038)	43.3 (1100)	43.3 (1100)	43.3 (1100)
4.31		Ground Clearance, laden, below mast	m1 in(mm)	4.9 (125)	4.9 (125)	5.5 (139)	5.5 (139)	5.5 (139)
4.32		Ground Clearance, centre of wheelbase	m2 in(mm)	5.5 (140)	5.5 (140)	6.1 (155)	6.1 (155)	6.1 (155)
4.34.1		Aisle Width for Pallets 39" x 47" Crossways	Ast in(mm)	152.1 (3862.5)	152.1 (3862.5)	158.6 (4027.5)	158.8 (4032.5)	158.8 (4032.5)
4.34.2		Aisle Width for Pallets 31.5" x 47" Lengthways		159.9 (4062.5)	159.9 (4062.5)	166.4 (4227.5)	166.6 (4232.5)	166.6 (4232.5)
4.35		Turning Radius	Wa in(mm)	86.6 (2200)	86.6 (2200)	92.5 (2350)	92.5 (2350)	92.5 (2350)
Performance Data	5.1	Travel Speed, laden/unladen	mph (km/h)	10.6/11.2 (17/18)	10.6/11.2 (17/18)	10.6/11.2 (17/18)	10.6/11.2 (17/18)	10.6/11.2 (17/18)
	5.2	Lift Speed, laden/unladen	ft/min (m/s)	78.7/98.4 (400/500)	78.7/98.4 (400/500)	78.7/98.4 (400/500)	68.9/86.6 (350/440)	68.9/86.6 (350/440)
	5.3	Lowering Speed, laden/unladen	ft/min (m/s)	98.4/76.8 (500/390)	98.4/76.8 (500/390)	92.5/82.7 (470/420)	92.5/82.7 (470/420)	92.5/82.7 (470/420)
	5.6	Max. Drawbar Pull, laden/unladen	N	11000	11000	13000	13000	13000
	5.8	Max. Gradeability, laden/unladen	%	20/25	20/25	20/25	18/25	17/25
	5.9	Acceleration Time, laden/unladen (0-10m)	s	/	/	/	/	/
5.10	Service Brake		Hydraulic	Hydraulic	Hydraulic	Hydraulic	Hydraulic	
5.11	Parking Brake		Mechanical	Mechanical	Mechanical	Mechanical	Mechanical	
Electric Motor	6.1	Drive Motor Rating S2 60 min	hp(kW)	21.5 (16AC)	21.5 (16AC)	21.5 (16AC)	21.5 (16AC)	21.5 (16AC)
	6.2	Lift Motor Rating at S3 15%	hp(kW)	32.2 (24AC)	32.2 (24AC)	32.2 (24AC)	32.2 (24AC)	32.2 (24AC)
	6.3	Battery acc. to DIN 43531/35/36 A,B,C, no		/	/	/	/	/
	6.4	Battery Voltage, nominal capacity K5	(V)/(Ah)	80/230	80/230	80/460	80/460	80/304
	6.5	Battery Weight	lb(kg)	396 (180)	396 (180)	639 (290)	639 (290)	529/240
Additional Data	10.1	Operating Pressure for Attachments	MPa	18.5	18.5	18.5	18.5	21
	10.2	Oil Volume for Attachments	ℓ/min	65	65	65	65	65



AST=a+Wa+x+B a: Clearance 7.8" (200mm)

Rated Capacities and Load Center Graph



4,000 - 5,000lb Mast Specification

Type	Model	Lifting Height	Lowered Overall Height	Overall Height		Free Lift Height		Tilt Range	Capacity (Mast vertical to ground)			
				Without Backrest	With Backrest	Without Backrest	With Backrest		Load Capacity at 24" (600mm)			
									Single Tire		Dual Tire	
				lb(kg)	lb(kg)	lb(kg)	lb(kg)		4,000lb	5,000lb	4,000lb	5,000lb
Limited Free Lift 2 Stage Mast	4,000-5,000lb	in (mm)	in (mm)	in (mm)	in (mm)	in (mm)	in (mm)	(°)	4,000lb	5,000lb	4,000lb	5,000lb
	AZA25M200	78.7 (2000)	59 (1499)	106.5 (2707)	119.9 (3046)	6.2 (160)	6.2 (160)	6/6	4000 (1814)	5000 (2268)	4000 (1814)	5000 (2268)
	AZA25M250	98.4 (2500)	68.8 (1749)	126.2 (3207)	139.6 (3546)	6.2 (160)	6.2 (160)	6/12	4000 (1814)	5000 (2268)	4000 (1814)	5000 (2268)
	AZA25M270	106.2 (2700)	72.7 (1849)	134.1 (3407)	147.4 (3746)	6.2 (160)	6.2 (160)	6/12	4000 (1814)	5000 (2268)	4000 (1814)	5000 (2268)
	AZA25M300	118.1 (3000)	78.7 (1999)	145.9 (3707)	159.2 (4046)	6.2 (160)	6.2 (160)	6/12	4000 (1814)	5000 (2268)	4000 (1814)	5000 (2268)
	AZA25M330	129.9 (3300)	84.6 (2149)	157.7 (4007)	171.1 (4346)	6.2 (160)	6.2 (160)	6/12	4000 (1814)	5000 (2268)	4000 (1814)	5000 (2268)
	AZA25M360	141.7 (3600)	92.4 (2349)	169.5 (4307)	182.9 (4646)	6.2 (160)	6.2 (160)	6/12	4000 (1814)	5000 (2268)	4000 (1814)	5000 (2268)
	AZA25M400	157.4 (4000)	102.3 (2599)	185.3 (4707)	198.6 (5046)	6.2 (160)	6.2 (160)	6/6	4000 (1814)	5000 (2268)	4000 (1814)	5000 (2268)
	AZA25M430	169.2 (4300)	108.2 (2749)	197.1 (5007)	210.4 (5346)	6.2 (160)	6.2 (160)	6/6	4000 (1814)	5000 (2268)	4000 (1814)	5000 (2268)
	AZA25M450	177.1 (4500)	112.1 (2849)	205 (5207)	218.3 (5546)	6.2 (160)	6.2 (160)	6/6	4000 (1814)	4900 (2223)	4000 (1814)	5000 (2268)
	AZA25M480	188.9 (4800)	118 (2999)	216.8 (5507)	230.1 (5846)	6.2 (160)	6.2 (160)	6/6	3900 (1769)	4700 (2132)	4000 (1814)	4900 (2223)
	AZA25M500	196.8 (5000)	122 (3099)	224.6 (5707)	238 (6046)	6.2 (160)	6.2 (160)	6/6	3700 (1678)	4600 (2087)	3900 (1769)	4700 (2132)
	AZA25M550	216.5 (5500)	131.8 (3349)	244.3 (6207)	257.7 (6546)	6.2 (160)	6.2 (160)	3/6	3500 (1588)	4300 (1950)	3800 (1724)	4400 (1996)
	AZA25M600	236.2 (6000)	141.6 (3599)	264 (6707)	277.4 (7046)	6.2 (160)	6.2 (160)	3/6	3100 (1406)	3800 (1724)	3600 (1633)	4000 (1814)
Full Free Lift 2 Stage Mast	AZA25U250	98.4 (2500)	69.4 (1764)	125.1 (3179)	139.6 (3546)	40.3 (1025)	24.3 (619)	6/12	4000 (1814)	5000 (2268)	4000 (1814)	5000 (2268)
	AZA25U270	106.2 (2700)	73.3 (1864)	133 (3379)	147.4 (3746)	44.2 (1125)	28.3 (719)	6/12	4000 (1814)	5000 (2268)	4000 (1814)	5000 (2268)
	AZA25U300	118.1 (3000)	79.2 (2014)	144.8 (3679)	159.2 (4046)	50.1 (1275)	34.2 (869)	6/12	4000 (1814)	5000 (2268)	4000 (1814)	5000 (2268)
	AZA25U330	129.9 (3300)	85.1 (2164)	156.6 (3979)	171.1 (4346)	56.1 (1425)	40.1 (1019)	6/12	4000 (1814)	5000 (2268)	4000 (1814)	5000 (2268)
	AZA25U360	141.7 (3600)	91.1 (2314)	168.4 (4279)	182.9 (4646)	62 (1575)	46 (1169)	6/12	4000 (1814)	5000 (2268)	4000 (1814)	5000 (2268)
	AZA25U400	157.4 (4000)	100.9 (2564)	184.2 (4679)	198.6 (5046)	71.8 (1825)	55.8 (1419)	6/12	4000 (1814)	5000 (2268)	4000 (1814)	5000 (2268)
Full Free Lift 3 Stage Mast	AZA25N400	157.4 (4000)	77.3 (1964)	186.5 (4739)	198.6 (5046)	50.5 (1285)	36.1 (918)	6/6	4000 (1814)	5000 (2268)	4000 (1814)	5000 (2268)
	AZA25N430	169.2 (4300)	81.2 (2064)	198.3 (5039)	210.4 (5346)	54.5 (1385)	40 (1018)	6/6	4000 (1814)	4900 (2223)	4000 (1814)	5000 (2268)
	AZA25N450	177.1 (4500)	83.2 (2114)	206.2 (5239)	218.3 (5546)	56.4 (1435)	42 (1068)	6/6	4000 (1814)	4700 (2132)	4000 (1814)	4900 (2223)
	AZA25N470	185 (4700)	87.1 (2214)	214.1 (5439)	226.2 (5746)	60.4 (1535)	45.9 (1168)	6/6	3900 (1769)	5000 (2041)	4000 (1814)	4700 (2132)
	AZA25N480	188.9 (4800)	89.1 (2264)	218 (5539)	230.1 (5846)	62.4 (1585)	47.9 (1218)	6/6	3900 (1769)	4500 (2041)	4000 (1814)	4700 (2132)
	AZA25N500	196.8 (5000)	93 (2364)	225.9 (5739)	238 (6046)	66.3 (1685)	51.8 (1318)	6/6	3700 (1678)	4300 (1950)	3900 (1769)	4500 (2041)
	AZA25N550	216.5 (5500)	100.9 (2564)	245.6 (6239)	257.7 (6546)	74.2 (1885)	59.7 (1518)	3/6	3500 (1588)	4100 (1860)	3800 (1724)	4200 (1905)
	AZA25N600	236.2 (6000)	110.7 (2814)	265.3 (6739)	277.4 (7046)	84 (2135)	69.6 (1768)	3/6	3100 (1406)	3700 (1678)	3600 (1633)	3900 (1769)
	AZA25N650	255.9 (6500)	118.6 (3014)	285 (7239)	297 (7546)	91.9 (2355)	77.4 (1968)	3/6	-	-	3100 (1406)	3600 (1633)
	AZA25N700	275.5 (7000)	128.5 (3264)	305.6 (7764)	316.7 (8046)	98.4 (2300)	87.3 (2218)	3/6	-	-	2300 (1043)	2900 (1315)

SUBTRACT 200lb (91kg) WITH INTEGRAL SIDESHIFTER. SUBTRACT 300lb (136kg) WITH EXTERNAL SIDESHIFTER.

7,000-7,600lb Mast Specification

Type	Model	Lifting Height	Lowered Overall Height	Overall Height		Free Lift Height		Tilt Range	Capacity (Mast vertical to ground)			
				Without Backrest	With Backrest	Without Backrest	With Backrest		Load Capacity at 24" (600mm)			
									Single Tire		Dual Tire	
				7,000lb	7,600lb	7,000lb	7,600lb		lb(kg)	lb(kg)	lb(kg)	lb(kg)
Limited Free Lift 2 Stage Mast	7,000-7,600lb	in (mm)	in (mm)	in (mm)	in (mm)	in (mm)	in (mm)	(°)	7,000lb	7,600lb	7,000lb	7,600lb
	AZA35M200	78.7 (2000)	65.7 (1669)	111.8 (2842)	123.8 (3145)	6.6 (170)	6.6 (170)	6/6	7000 (3175)	7600 (3447)	7000 (3175)	7600 (3447)
	AZA35M250	98.4 (2500)	75.5 (1919)	131.5 (3342)	143.5 (3645)	6.6 (170)	6.6 (170)	6/12	7000 (3175)	7600 (3447)	7000 (3175)	7600 (3447)
	AZA35M270	106.2 (2700)	79.4 (2019)	139.4 (3542)	151.3 (3845)	6.6 (170)	6.6 (170)	6/12	7000 (3175)	7600 (3447)	7000 (3175)	7600 (3447)
	AZA35M300	118.1 (3000)	85.3 (2169)	151.2 (3842)	163.1 (4145)	6.6 (170)	6.6 (170)	6/12	7000 (3175)	7600 (3447)	7000 (3175)	7600 (3447)
	AZA35M330	129.9 (3300)	91.2 (2319)	163 (4142)	175 (4445)	6.6 (170)	6.6 (170)	6/12	7000 (3175)	7600 (3447)	7000 (3175)	7600 (3447)
	AZA35M360	141.7 (3600)	97.2 (2469)	174.8 (4442)	186.8 (4745)	6.6 (170)	6.6 (170)	6/12	7000 (3175)	7600 (3447)	7000 (3175)	7600 (3447)
	AZA35M400	157.4 (4000)	109 (2769)	190.6 (4842)	202.5 (5145)	6.6 (170)	6.6 (170)	6/12	7000 (3175)	7600 (3447)	7000 (3175)	7600 (3447)
	AZA35M430	169.2 (4300)	114.9 (2919)	202.4 (5142)	214.3 (5445)	6.6 (170)	6.6 (170)	6/6	6800 (3084)	7400 (3357)	7000 (3175)	7600 (3447)
	AZA35M450	177.1 (4500)	118.8 (3019)	210.3 (5342)	222.2 (5645)	6.6 (170)	6.6 (170)	6/6	6600 (2994)	7200 (3266)	6800 (3084)	7400 (3357)
	AZA35M480	188.9 (4800)	124.7 (3169)	222.1 (5642)	234 (5945)	6.6 (170)	6.6 (170)	6/6	6400 (2903)	7000 (3175)	6600 (2994)	7200 (3266)
	AZA35M500	196.8 (5000)	128.7 (3269)	230 (5842)	241.9 (6145)	6.6 (170)	6.6 (170)	6/6	6200 (2812)	6800 (3084)	6400 (2903)	7000 (3175)
	AZA35M550	216.5 (5500)	138.5 (3519)	249.6 (6342)	261.6 (6645)	6.6 (170)	6.6 (170)	3/6	6000 (2722)	6600 (2994)	6200 (2812)	6800 (3084)
	AZA35M600	236.2 (6000)	148.3 (3769)	269.3 (6842)	281.2 (7145)	6.6 (170)	6.6 (170)	3/6	5300 (2404)	5900 (2676)	5600 (2540)	6200 (2812)
Full Free Lift 2 Stage Mast	AZA35U250	98.4 (2500)	76.1 (1934)	133.5 (3391)	143.5 (3645)	41 (1043)	31 (789)	6/12	7000 (3175)	7600 (3447)	7000 (3175)	7600 (3447)
	AZA35U270	106.2 (2700)	80 (2034)	141.3 (3591)	151.3 (3845)	45 (1143)	35 (889)	6/12	7000 (3175)	7600 (3447)	7000 (3175)	7600 (3447)
	AZA35U300	118.1 (3000)	85.9 (2184)	153.1 (3891)	163.1 (4145)	50.9 (1293)	40.9 (1039)	6/12	7000 (3175)	7600 (3447)	7000 (3175)	7600 (3447)
	AZA35U330	129.9 (3300)	91.8 (2334)	165 (4191)	175 (4445)	56.8 (1443)	46.8 (1189)	6/12	7000 (3175)	7600 (3447)	7000 (3175)	7600 (3447)
	AZA35U360	141.7 (3600)	97.7 (2484)	176.8 (4491)	186.8 (4745)	62.7 (1593)	52.7 (1339)	6/12	7000 (3175)	7600 (3447)	7000 (3175)	7600 (3447)
	AZA35U400	157.4 (4000)	107.6 (2734)	192.5 (4891)	202.5 (5145)	72.5 (1843)	62.5 (1589)	6/12	7000 (3175)	7600 (3447)	7000 (3175)	7600 (3447)
Full Free Lift 3 Stage Mast	AZA35N400	157.4 (4000)	83.4 (2119)	192.5 (4891)	202.5 (5145)	48.3 (1228)	38.3 (974)	6/6	6800 (3084)	7400 (3357)	7000 (3175)	7600 (3447)
	AZA35N430	169.2 (4300)	87.3 (2219)	204.3 (5191)	214.3 (5445)	52.2 (1328)	42.2 (1074)	6/6	6600 (2994)	7200 (3266)	6800 (3084)	7400 (3357)
	AZA35N450	177.1 (4500)	91.2 (2319)	212.2 (5391)	222.2 (5645)	56.2 (1428)	46.2 (1174)	6/6	6400 (2903)	7000 (3175)	6600 (2994)	7200 (3266)
	AZA35N470	185 (4700)	95.2 (2419)	220.1 (5591)	230.1 (5845)	60.1 (1528)	50.1 (1274)	6/6	6200 (2812)	6800 (3084)	6400 (2903)	7000 (3175)
	AZA35N480	188.9 (4800)	97.2 (2469)	224 (5691)	234 (5945)	62.1 (1578)	52.1 (1324)	6/6	6200 (2812)	6800 (3084)	6400 (2903)	7000 (3175)
	AZA35N500	196.8 (5000)	103.1 (2619)	231.9 (5891)	241.9 (6145)	68 (1728)	58 (1474)	6/6	6200 (2812)	6700 (3039)	6400 (2903)	6900 (3130)
	AZA35N550	216.5 (5500)	112.9 (2869)	251.6 (6391)	261.6 (6645)	77.8 (1978)	67.8 (1724)	3/6	6000 (2722)	6500 (2948)	6200 (2812)	6700 (3039)
	AZA35N600	236.2 (6000)	122.7 (3119)	272.4 (6919)	281.2 (7145)	86.6 (2200)	77.7 (1974)	3/6	5300 (2404)	5800 (2631)	5600 (2540)	6100 (2767)
	AZA35N650	255.9 (6500)	132.6 (3369)	290.9 (7391)	300.9 (7645)	97.5 (2478)	87.5 (2224)	3/6	-	-	4800 (2177)	5300 (2404)
	AZA35N700	275.5 (7000)	142.4 (3619)	311.7 (7919)	320.6 (8145)	106.2 (2700)	97.4 (2474)	3/6	-	-	4100 (1860)	4500 (2041)

SUBTRACT 200lb (91kg) WITH INTEGRAL SIDESHIFTER. SUBTRACT 400lb (181kg) WITH EXTERNAL SIDESHIFTER. The 7,000-7,600lb XE Series can be fitted with an optional 177.1" Full Free Lift 3 Stage Mast for container work.

6,000lb Mast Specification

Type	Model	Lifting Height	Lowered Overall Height	Overall Height		Free Lift Height		Tilt Range	Capacity (Mast vertical to ground)	
				Without Backrest	With Backrest	Without Backrest	With Backrest		Load Capacity at 24" (600mm)	
									Single Tire	
				6,000lb	6,000lb	lb(kg)	lb(kg)		6,000lb	6,000lb
Limited Free Lift 2 Stage Mast	6,000lb	in (mm)	in (mm)	in (mm)	in (mm)	in (mm)	in (mm)	(°)	6,000lb	6,000lb
	AZA30M200	78.7 (2000)	61.1 (1554)	108.9 (2767)	123.8 (3145)	6.4 (165)	6.4 (165)	6/6	6000 (2722)	6000 (2722)
	AZA30M250									