



HANGCHA

MONTACARGAS REMMOSA SA DE CV

Site:

Vía Jose Lopez Portillo Km. 29.5,
San Lorenzo Tetliltac, C.P. 55714, Coacalco,
Edo. Méx.

Phone : 55 2600 2960

ventas@montacargas-hangcha.com
www.montacargas-hangcha.com



2021 VERSION 1/COPYRIGHT 2021

HANGCHA GROUP CO., LTD. reserves the right to make any changes without notice concerning colors, equipment, or specifications detailed in this brochure, or to discontinue individual models. The colors of trucks, delivered may differ slightly from those in brochures.



XF Series LPG Cushion Tire Forklift

with capacities of 4,000 to 6,500lbs

Making Material Handling Easier
SINCE 1956



CONCEPT

Designed for the North American market, the XF Series LPG Cushion Tire Forklift from Hangcha Group is built to meet the needs of warehouses, distribution centers, and manufacturing facilities. This forklift features a capable lifting capacity of 4,000-6,500lbs. This forklift also includes the latest advancements from Hangcha. These advancements include LED efficient lighting, a load-sensing hydraulic system, a reliable engine, noise & vibration control, and a new control system. This is the LPG Cushion Tire Forklift from Hangcha Group.

LED Light System and Environmentally-Friendly Materials



LED lights are used throughout the entire truck. The lights are energy efficient, have a longer service life, and offer a significant increase in performance.

Environmentally-friendly materials are also used throughout the truck to minimize environmental damage and impact.





The Wide View Mast Offers Better Visibility

The mast has been redesigned to include new types of steel channels and a new mast system. This was done to increase forward visibility for the operator.



Low LPG Fuel Warning Indicator

The New Integrated Fuse Box

The next generation of integrated fuse box has been added to the truck. It offers a better layout, ease of service and maintenance, and is waterproof.

The entire truck is equipped with waterproof connectors to increase the electronics' reliability.



Panoramic Rearview Mirror

The panoramic rearview mirror allows the operator to have wider rear visibility when operating the forklift.



Reliable Hydraulic System

The hydraulic system has a longer service life and an increase in efficiency thanks to the optimized hydraulic breather structure with a built-in return oil filter and the load-sensing hydraulic steering system.

Optimized Cooling System

The cooling system has been designed to maximize cooling and increase the reliability of the engine when working under heavy loads. This system uses an aluminum radiator, independent oil cooler, optimized heat transfer channel and a dual-hole counterweight to increase cooling efficiency.





Ergonomic Design

The small diameter, adjustable steering wheel, electro-hydraulic steering, and the combination switch increase the ease of operation and operator comfort substantially.



Swing-Out LP Bracket

The swing out LP cylinder holder makes replacing the LP cylinder and opening the maintenance hatch for service easy.



Nissan K25 Engine

Hangcha uses the Nissan GCT GK25 engine in the XF Series Cushion Tire Forklift. By using an industry known engine, operators know that the engines will reliably provide the power and torque needed to get the job done.



Large LCD Instrument Panel

The LCD instrument display has many functions and offers stable performance. Important information including the running status of the entire truck and a check engine light can be displayed. This allows the operator to easily understand the status of the truck for easy maintenance.



Large Hand Grip

The large hand grip on the overhead guard is designed to allow the operator to get in and out of the truck safer and easier.



High-Strength Overhead Guard

The overhead guard is fabricated with specially shaped steel tubes to increase its structural rigidity and strength. It is also designed to be easily disassembled and reassembled for repairs. The guard features a flexible connection between it and the chassis to decrease vibrations. All of these features are responsible for increasing operator safety and comfort.



Steering Axle

The steering axle uses large conical bearings on the master pin, buffer blocks, and a large-diameter steering cylinder to substantially increase the reliability and service life of the steering system.



Maintenance Hatch with a Safety Latch

The maintenance hatch opens wide enough to provide easy serviceability of key components. The safety latch prevents the hatch from compromising operator safety when using the truck.

Standard Configuration

- / Traction Unit
- / Small Diameter Steering Wheel
- / Integrated Combination Switch
- / Extended Hand Grip
- / Adjustable Steering Wheel
- / Mechanical Parking Brake (with self-lock)
- / Suspension Seat with Safety Belt
- / Large Capacity Aluminum Radiator
- / Dynamic Load Sensing System
- / Overhead Guard
- / Whirlwind High-Efficiency Air Filter
- / Safe Filter Element
- / Inclined Oil Way Latching Valve
- / Panoramic Rear View Mirror
- / Highly Efficient Exhaust Muffler
- / Hydraulic Oil Dipstick
- / Smooth Cushion Tire
- / Access/Exit Safe Step
- / Highly efficient LED Combination Front and Rear Lights
- / Large Rubber Pedal Pad
- / Full Floating Transmission
- / Maintenance-Free Battery
- / Transmission Oil Filter
- / Hydraulic Oil Return Filter
- / Combined LCD Meters
- / Maintenance Hatch Spring

- / Integrated Controller
- / Gearbox Oil Cooler
- / Clipboard
- / Alarm Light
- / Non-Asbestos Brakes
- / Electro-Hydraulic Steering
- / Charging Reminder
- / Load-Sensing Steering System
- / Suspended Operation Pedal
- / Oil Gauge
- / Water Thermometer
- / Cup Holder
- / Pre-heating Indication
- / Limited Free Lift 2 Stage Mast
- / Charging Indication
- / Standard Fork
- / Timer
- / Standard Carriage
- / Engine Oil Pressure Alarm
- / Standard Load Backrest
- / Gearbox Oil Temperature Alarm
- / Maintenance Reminder
- / Load Safety Valve
- / Fan Protector
- / Horn
- / Soft Landing System
- / Reverse Buzzer

- / Mast Lifting Buffer Device
- / Tilt Piston Rod Jacket
- / Rear Reverse Grip with Horn Button
- / Front Acoustic Hood of Steering Wheels
- / Low LPG Fuel Warning Indicator
- / Soundproof Pad on Maintenance Hatch
- / Speed Control Switch
- / 20lb Swing-Out LP bracket (3000-3500lbs)
- / 32lb Swing-Out LP bracket (4000-6500lbs)
- / Operator Presence Sensing System (OPS)

Options

- / Customizable Paint Colors
- / LED Rear Work Light
- / Blue Light
- / Auxiliary Hydraulic Valve Group
- / Fire Extinguisher
- / High-Low Overhead Guard
- / Radiator Screen
- / Pre-Cleaner
- / Counterweight Grill
- / Swing-Down LP Bracket (4000-6500lbs)
- / Traction Cushion Tire
- / Smooth Non-Marking Cushion Tire
- / Belly Pan
- / Paper Roll Clamp
- / Sideshift and Fork Positioner
- / Wider Carriage
- / Various Specialty Attachments
- / Specialty Forks

4000-5000lbs XF Series Mast:(Cushion)

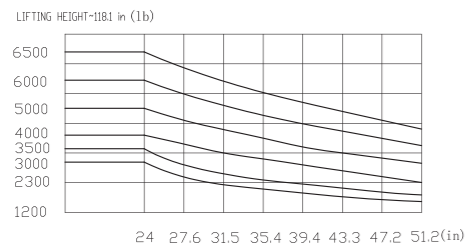
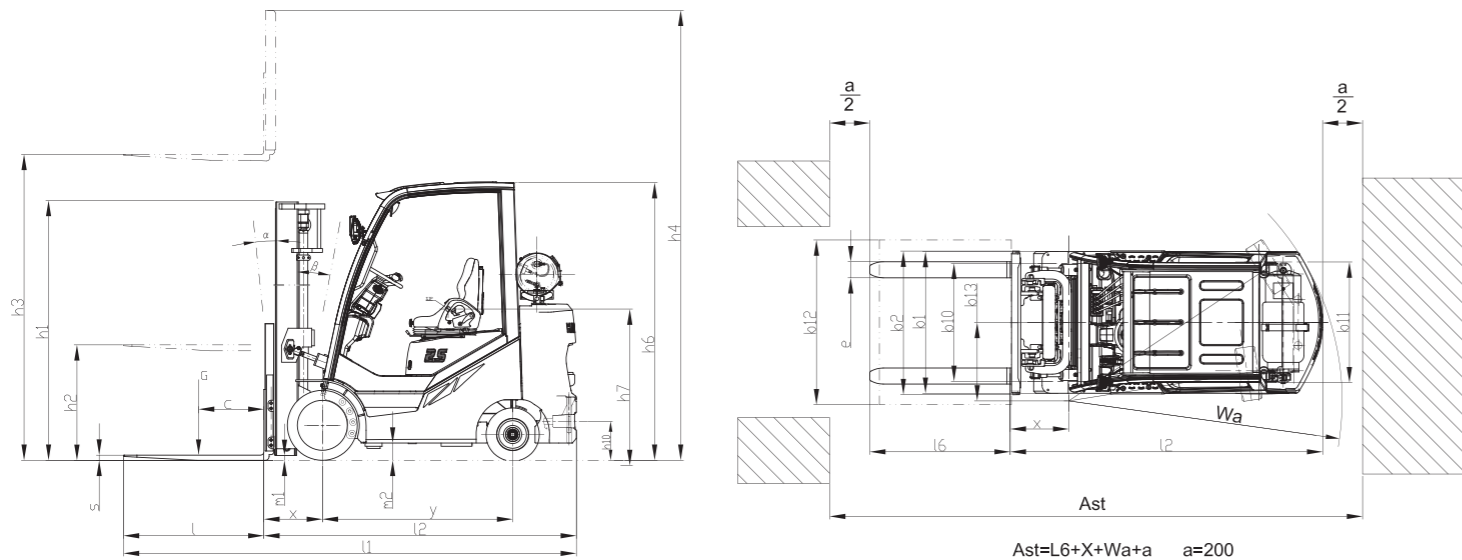
Type	Model	Max. Fork Height	Overall Height				Free Lift		Front Overhang	Tilt Range	Capacity	
			Lowered	Extended		Without Backrest	With Backrest	FIR		Load Capacity at 24in (600mm)		
				Without Backrest	With Backrest					4000lb(2.0t)	5000lb(2.5t)	
		in (mm)	in (mm)	in (mm)	in (mm)	in (mm)	in (mm)	in (mm)	(°)	lb(kg)	lb(kg)	
Limited Free Lift 2 Stage Mast	XFC25M200	78.7(2000)	57.9 (1470)	106 (2692)	119.9 (3046)	5.5 (140)	5.5 (140)	16.8 (427)	6/8	4000 (1800)	5000 (2250)	
	XFC25M250	98.4 (2500)	67.7 (1720)	125.7 (3192)	139.6 (3546)	5.5 (140)	5.5 (140)	16.8 (427)	6/8	4000 (1800)	5000 (2250)	
	XFC25M270	106.3(2700)	71.7 (1820)	133.5 (3392)	147.5 (3746)	5.5 (140)	5.5 (140)	16.8 (427)	6/8	4000 (1800)	5000 (2250)	
	XFC25M300	118.1(3000)	77.6 (1970)	145.4 (3692)	159.3 (4046)	5.5 (140)	5.5 (140)	16.8 (427)	6/8	4000 (1800)	5000 (2250)	
	XFC25M330	129.9(3300)	83.5 (2120)	156.8 (3992)	171.1 (4346)	5.5 (140)	5.5 (140)	16.8 (427)	6/8	4000 (1800)	5000 (2250)	
	XFC25M350	137.8(3500)	87.4 (2220)	157.2 (4192)	179 (4546)	5.5 (140)	5.5 (140)	16.8 (427)	6/8	4000 (1800)	5000 (2250)	
	XFC25M360	141.7(3600)	91.3 (2320)	169 (4292)	182.9 (4646)	5.5 (140)	5.5 (140)	16.8 (427)	6/8	4000 (1800)	5000 (2250)	
	XFC25M400	157.5(4000)	101.2 (2570)	184.7 (4692)	198.7 (5046)	5.5 (140)	5.5 (140)	16.8 (427)	6/8	4000 (1800)	5000 (2250)	
	XFC25M430	169.3(4300)	107.1 (2720)	196.5 (4992)	210.5 (5346)	5.5 (140)	5.5 (140)	16.8 (427)	6/6	4000 (1800)	5000 (2250)	
	XFC25M450	177.2(4500)	111 (2820)	204.4 (5192)	218.3 (5546)	5.5 (140)	5.5 (140)	16.8 (427)	6/6	4000 (1800)	5000 (2250)	
	XFC25M470	185(4700)	115 (2920)	212.3 (5392)	226.2 (5746)	5.5 (140)	5.5 (140)	16.8 (427)	6/6	4000 (1800)	5000 (2250)	
	XFC25M480	189 (4800)	116.9 (2970)	216.2 (5492)	230.2 (5846)	5.5 (140)	5.5 (140)	16.8 (427)	6/6	4000 (1800)	5000 (2250)	
XFC25M500	196.9(5000)	120.9 (3070)	224.1 (5692)	238 (6046)	5.5 (140)	5.5 (140)	16.8 (427)	6/6	3850 (1750)	4400 (2000)		
Full Free Lift 2 Stage Mast	XFC25U200	78.7(2000)	57.9 (1470)	103.2 (2622)	119.9 (3046)	33.4 (848)	16.7 (424)	16.8 (427)	6/8	4000 (1800)	5000 (2250)	
	XFC25U250	98.4(2500)	67.7 (1720)	123 (3122)	139.6 (3546)	43.2 (1098)	26.5 (674)	16.8 (427)	6/8	4000 (1800)	5000 (2250)	
	XFC25U270	106.3(2700)	71.7 (1820)	130.8 (3322)	147.5 (3746)	47.2 (1198)	30.5 (774)	16.8 (427)	6/8	4000 (1800)	5000 (2250)	
	XFC25U300	118.1(3000)	77.6 (1970)	142.6 (3622)	159.3 (4046)	53.1 (1348)	36.4 (924)	16.8 (427)	6/8	4000 (1800)	5000 (2250)	
	XFC25U330	129.9(3300)	83.5 (2120)	154.4 (3922)	171.1 (4346)	59 (1498)	42.2 (1074)	16.8 (427)	6/8	4000 (1800)	5000 (2250)	
	XFC25U350	137.8(3500)	87.4 (2220)	162.3 (4122)	179 (4546)	62.9 (1598)	46.2 (1174)	16.8 (427)	6/8	4000 (1800)	5000 (2250)	
	XFC25U360	141.7(3600)	89.4 (2270)	166.2 (4222)	182.9 (4646)	64.9 (1648)	48.2 (1224)	16.8 (427)	6/8	4000 (1800)	5000 (2250)	
	XFC25U400	157.5(4000)	99.2 (2520)	182 (4622)	198.7 (5046)	74.7 (1898)	58(1474)	16.8 (427)	6/8	4000 (1800)	5000 (2250)	
Full Free Lift 3 Stage Mast	XFC25N400	157.5(4000)	73.6 (1870)	182 (4622)	198.7 (5046)	49.1 (1248)	32.4 (824)	17.0 (431)	6/6	4000 (1800)	5000 (2250)	
	XFC25N430	169.3(4300)	77.6 (1970)	193.8 (4922)	210.5 (5346)	53.1 (1348)	36.4 (924)	17.0 (431)	6/6	4000 (1800)	5000 (2250)	
	XFC25N450	177.2(4500)	79.5 (2020)	201.7 (5122)	218.3 (5546)	55 (1398)	38.3 (974)	17.0 (431)	6/6	4000 (1800)	5000 (2250)	
	XFC25N470	185(4700)	82.4 (2095)	209.5 (5322)	226.2 (5746)	58(1473)	41.3 (1049)	17.0 (431)	6/6	4000 (1800)	5000 (2250)	
	XFC25N480	189(4800)	83.5 (2120)	213.5 (5422)	230.2 (5846)	59(1498)	42.2 (1074)	17.0 (431)	6/6	4000 (1800)	5000 (2250)	
	XFC25N500	196.9(5000)	86.4 (2195)	221.3 (5622)	238 (6046)	62(1573)	45.2 (1149)	17.0 (431)	6/6	3900 (1750)	4400 (2000)	
	XFC25N550	216.5(5500)	93.3 (2370)	241 (6122)	257.7 (6546)	68.8(1748)	52.1 (1324)	17.0 (431)	3/6	3700 (1650)	4300 (1950)	
	XFC25N600	236.2(6000)	101.2 (2570)	260.7 (6622)	277.4 (7046)	76.7(1948)	60 (1524)	17.0 (431)	3/6	2750 (1250)	3000 (1350)	
Four Cylinder Full Free Lift 3 Stage Mast	XFC25D400	157.5(4000)	73.6 (1870)	182 (4622)	198.7 (5046)	49.1(1248)	32.4 (824)	17.0 (431)	6/6	4000 (1800)	5000 (2250)	
	XFC25D430	169.3(4300)	77.6 (1970)	193.8 (4922)	210.5 (5346)	53.1 (1348)	36.4 (924)	17.0 (431)	6/6	4000 (1800)	5000 (2250)	
	XFC25D450	177.2(4500)	79.5 (2020)	201.7 (5122)	218.3 (5546)	55(1398)	38.3 (974)	17.0 (431)	6/6	4000 (1800)	5000 (2250)	
	XFC25D470	185(4700)	82.4 (2095)	209.5 (5322)	226.2 (5746)	58(1473)	41.3 (1049)	17.0 (431)	6/6	4000 (1800)	5000 (2250)	
	XFC25D480	189(4800)	83.5 (2120)	213.5 (5422)	230.2 (5846)	59(1498)	42.2 (1074)	17.0 (431)	6/6	4000 (1800)	5000 (2250)	
	XFC25D500	196.9(5000)	86.4 (2195)	221.3 (5622)	238 (6046)	62(1573)	45.2 (1149)	17.0 (431)	6/6	3900 (1750)	4400 (2000)	
	XFC25D550	216.5(5500)	93.3 (2370)	241 (6122)	257.7 (6546)	68.8(1748)	52.1 (1324)	17.0 (431)	3/6	3700 (1650)	4300 (1950)	
	XFC25D600	236.2(6000)	101.2 (2570)	260.7 (6622)	277.4 (7046)	76.7(1948)	60 (1524)	17.0 (431)	3/6	2750 (1250)	3000 (1350)	

With sideshifter minus 300lb(150kg),with integral sideshifter minus 200lb(100kg).

6000-6500lb XF Series Mast:

Type	Model	Max. Fork Height in (mm)	Overall Height				Free Lift		Front Overhang in (mm)	Tilt Range FUR (°)	Capacity	
			Lowered in (mm)	Extended		Without Backrest in (mm)	With Backrest in (mm)	Load capacity at 24 in (600mm)				
				Without Backrest in (mm)	With Backrest in (mm)			6000lb(3.0t) lb(kg)			6500lb(3.2t) lb(kg)	
Limited Free Lift 2 Stage Mast	XFC30M200	78.7(2000)	57.9 (1470)	106.4 (2702)	123.8 (3145)	5.3 (135)	5.3 (135)	17.7 (450)	6/8	6000 (2700)	6500 (2950)	
	XFC30M250	98.4(2500)	67.7 (1720)	126.1 (3202)	143.5 (3645)	5.3 (135)	5.3 (135)	17.7 (450)	6/8	6000 (2700)	6500 (2950)	
	XFC30M270	106.3(2700)	71.7 (1820)	134 (3402)	151.4 (3845)	5.3 (135)	5.3 (135)	17.7 (450)	6/8	6000 (2700)	6500 (2950)	
	XFC30M300	118.1(3000)	77.6 (1970)	145.7 (3702)	163.2 (4145)	5.3 (135)	5.3 (135)	17.7 (450)	6/8	6000 (2700)	6500 (2950)	
	XFC30M330	129.9(3300)	83.5 (2120)	157.6 (4002)	175 (4445)	5.3 (135)	5.3 (135)	17.7 (450)	6/8	6000 (2700)	6500 (2950)	
	XFC30M350	137.8(3500)	87.4 (2220)	165.4 (4202)	182.9 (4645)	5.3 (135)	5.3 (135)	17.7 (450)	6/8	6000 (2700)	6500 (2950)	
	XFC30M360	141.7(3600)	91.3 (2320)	169.4 (4302)	186.8 (4745)	5.3 (135)	5.3 (135)	17.7 (450)	6/8	6000 (2700)	6500 (2950)	
	XFC30M400	157.5(4000)	101.2 (2570)	185.1 (4702)	202.6 (5145)	5.3 (135)	5.3 (135)	17.7 (450)	6/8	6000 (2700)	6500 (2950)	
	XFC30M430	169.3(4300)	107.1 (2720)	196.9 (5002)	214.4 (5445)	5.3 (135)	5.3 (135)	17.7 (450)	6/6	6000 (2700)	6500 (2950)	
	XFC30M450	177.2(4500)	111 (2820)	204.8 (5202)	222.2 (5645)	5.3 (135)	5.3 (135)	17.7 (450)	6/6	6000 (2700)	6500 (2950)	
	XFC30M470	185(4700)	115 (2920)	212.7 (5402)	230.1 (5845)	5.3 (135)	5.3 (135)	17.7 (450)	6/6	5850 (2650)	6050 (2750)	
	XFC30M480	189(4800)	116.9 (2970)	216.6 (5502)	234.1 (5945)	5.3 (135)	5.3 (135)	17.7 (450)	6/6	5750 (2600)	6000 (2700)	
XFC30M500	196.9(5000)	120.9 (3070)	224.5 (5702)	241.9 (6145)	5.3 (135)	5.3 (135)	17.7 (450)	6/6	5400 (2450)	5500 (2500)		
Full Free Lift 2 Stage Mast	XFC30U200	78.7(2000)	59.8 (1520)	105.7 (2685)	123.8 (3145)	32.9 (835)	14.8 (375)	17.7 (450)	6/8	6000 (2700)	6500 (2950)	
	XFC30U250	98.4(2500)	69.7 (1770)	126.4 (3185)	143.5 (3645)	42.7 (1085)	24.6 (625)	17.7 (450)	6/8	6000 (2700)	6500 (2950)	
	XFC30U270	106.3(2700)	73.6 (1870)	133.3 (3385)	151.4 (3845)	46.7 (1185)	28.5 (725)	17.7 (450)	6/8	6000 (2700)	6500 (2950)	
	XFC30U300	118.1(3000)	79.5 (2020)	145 (3685)	163.2 (4145)	52.6 (1335)	34.4 (875)	17.7 (450)	6/8	6000 (2700)	6500 (2950)	
	XFC30U330	129.9(3300)	85.4 (2170)	156.9 (3985)	175 (4445)	58.5 (1485)	40.4 (1025)	17.7 (450)	6/8	6000 (2700)	6500 (2950)	
	XFC30U350	137.8(3500)	89.3 (2270)	164.8 (4185)	182.9 (4645)	62.4 (1585)	44.3 (1125)	17.7 (450)	6/8	6000 (2700)	6500 (2950)	
	XFC30U360	141.7(3600)	91.3 (2320)	168.7 (4285)	186.8 (4745)	64.4 (1635)	46.3 (1175)	17.7 (450)	6/8	6000 (2700)	6500 (2950)	
	XFC30U400	157.5(4000)	101.2 (2570)	184.4 (4685)	202.6 (5145)	74.2 (1885)	56.1 (1425)	17.7 (450)	6/8	6000 (2700)	6500 (2950)	
	XFC30N400	157.5(4000)	77.6 (1970)	184.4 (4685)	202.6 (5145)	50.4 (1280)	32.3 (825)	18 (457)	6/6	6000 (2700)	6500 (2950)	
	XFC30N430	169.3(4300)	79.5 (2020)	196.3 (4985)	214.4 (5445)	52.4 (1330)	34.4 (875)	18 (457)	6/6	6000 (2700)	6500 (2950)	
	XFC30N450	177.2(4500)	83.5 (2120)	204 (5185)	222.2 (5645)	56.3 (1430)	38.4 (975)	18 (457)	6/6	6000 (2700)	6500 (2950)	
	XFC30N470	185(4700)	87.4 (2220)	212 (5385)	230.1 (5845)	60.2 (1530)	42.3 (1075)	18 (457)	6/6	5850 (2650)	6050 (2750)	
Full Free Lift 3 Stage Mast	XFC30N480	189(4800)	89.3 (2270)	216 (5485)	234.1 (5945)	62.2 (1580)	44.3 (1125)	18 (457)	6/6	5750 (2600)	6000 (2700)	
	XFC30N500	196.9(5000)	93.3 (2370)	223.8 (5685)	241.9 (6145)	66.1 (1680)	48.2 (1225)	18 (457)	6/6	5400 (2450)	5500 (2500)	
	XFC30N550	216.5(5500)	101.2 (2570)	243.5 (6185)	261.6 (6645)	74.0 (1880)	56.1 (1425)	18 (457)	3/6	4000 (1800)	4600 (2100)	
	XFC30N600	236.2(6000)	111 (2820)	263.2 (6685)	281.3 (7145)	83.9 (2130)	65.9 (1675)	18 (457)	3/6	3850 (1750)	3750 (1700)	
	XFC30D400	157.5(4000)	77.6 (1970)	184.4 (4685)	202.6 (5145)	50.4 (1280)	32.3 (825)	18 (457)	6/6	6000 (2700)	6500 (2950)	
	XFC30D430	169.3(4300)	79.5 (2020)	196.3 (4985)	214.4 (5445)	52.4 (1330)	34.4 (875)	18 (457)	6/6	6000 (2700)	6500 (2950)	
	XFC30D450	177.2(4500)	83.5 (2120)	204 (5185)	222.2 (5645)	56.3 (1430)	38.4 (975)	18 (457)	6/6	6000 (2700)	6500 (2950)	
	XFC30D470	185(4700)	87.4 (2220)	212 (5385)	230.1 (5845)	60.2 (1530)	42.3 (1075)	18 (457)	6/6	5850 (2650)	6050 (2750)	
	XFC30D480	189 (4800)	89.3 (2270)	216 (5485)	234.1 (5945)	62.2 (1580)	44.3 (1125)	18 (457)	6/6	5750 (2600)	6000 (2700)	
	XFC30D500	196.9(5000)	93.3 (2370)	223.8 (5685)	241.9 (6145)	66.1 (1680)	48.2 (1225)	18 (457)	6/6	5400 (2450)	5500 (2500)	
	XFC30D550	216.5(5500)	101.2 (2570)	243.5 (6185)	261.6 (6645)	74.0 (1880)	56.1 (1425)	18 (457)	3/6	4000 (1800)	4600 (2100)	
	XFC30D600	236.2(6000)	111 (2820)	263.2 (6685)	281.3 (7145)	83.9 (2130)	65.9 (1675)	18 (457)	3/6	3850 (1750)	3750 (1700)	

With sideshifter, subtract 400lbs (200kg). With integral sideshifter, subtract 200lbs (100kg).



XF Series LPG Cushion Tire Forklift 4000-6500lb

		HANGCHA GROUP CO.,LTD.			
Distinguishing Marks	1.1	Manufacturer			
	1.2	HCFA Model	FPG20C	FPG25C	FPG30C
Weight	2.1	Service Weight	7880 (3575)	8640 (3920)	9570 (4340)
	2.2	Axle Loading, laden front/rear	10210/1670 (4610/765)	11830/1810 (5350/820)	13500/2070 (6100/940)
Tires, Chassis	3.1	Tires: solid rubber, superelastic, pneumatic, polyurethane	Cushion	Cushion	Cushion
	3.2	Tire Size, front	21×7×15	21×7×15	21×8×15
	3.3	Tire Size, rear	16×6×10.5	16×6×10.5	16×6×10.5
	3.4	Wheels, number front / rear (x = driven wheels)	2×/2	2×/2	2×/2
	3.5	Tread, front	b10 in (mm)	35.4(900)	36.2(920)
	3.6	Tread, rear	b11 in (mm)	36.2(920)	36.2(920)
Dimensions	4.1	Tilt of Mast/Fork Carriage Forward/Backward	α/β (°)	6/8	6/8
	4.2	Height, mast lowered	h1 in (mm)	77.6(1970)	77.6(1970)
	4.3	Free Lift	h2 in (mm)	5.5(140)	5.5(140)
	4.4	Lift	h3 in (mm)	118.1(3000)	118.1(3000)
	4.5	Height, mast extended	h4 in (mm)	159.3(4046)	159.3(4046)
	4.6	Height of Overhead Guard	h6 in (mm)	83.3(2115)	83.3(2115)
	4.7	Seat Height Relating to SIP	h7 in (mm)	40.2(1020)	40.2(1020)
	4.8	Coupling Height	h10 in (mm)	11.8(300)	11.8(300)
	4.9	Overall Length	l1 in (mm)	132.5(3367)	135.1(3432)
	4.10	Length to Face of Forks	l2 in (mm)	90.4(2297)	93(2362)
	4.11	Overall Width (without backrest)	b1 in (mm)	42.5(1080)	42.5(1080)
	4.12	Fork Dimensions	s/e/l in (mm)	1.6×4.8×42(40×122×1070)	1.6×4.8×42(40×122×1070)
	4.13	Fork Carriage DIN 15 173 --- ISO 2328, class/type A,B		Class A	Class A
	4.14	Backrest Width	b2 in (mm)	43 (1094)	43 (1094)
	4.15	Fork-Carriage Width	b3 in (mm)	40.9(1038)	40.9(1038)
	4.16	Distance between Fork-Arms	b5 in (mm)	8.9-39.7(226-1008)	8.9-39.7(226-1008)
	4.17	Ground Clearance, laden, below mast	m1 in (mm)	3.5(90)	3.5(90)
	4.18	Ground Clearance, centre of wheelbase	m2 in (mm)	5.1(130)	5.1(130)
	4.19.1	Aisle Width for Pallets 39" x 47" Crossways	Ast in (mm)	139.8(3552)	142.4(3617)
	4.19.2	Aisle Width for Pallets 31.5" x 47" Lengthways	Ast in (mm)	147.7(3752)	150.3(3817)
	4.20	Turning Radius	Wa in (mm)	75.8(1925)	78.3(1990)
4.21	Minimum Plotting Distance	b13 in (mm)	21.2(539)	21.2(539)	
Performance Data	5.1	Travel Speed, laden/unladen	mph (km/h)	10.9/11.5 (17.5/18.5)	10.9/11.5 (17.5/18.5)
	5.2	Lift Speed, laden/unladen	ft/min (m/s)	122/128 (0.62/0.65)	122/128 (0.62/0.65)
	5.3	Lowering Speed, laden/unladen	ft/min (m/s)	88.6/98.4 (0.45/0.50)	88.6/98.4 (0.45/0.50)
	5.4	Drawbar Pull, laden/unladen	N	23000/9000	23000/9000
	5.5	Gradeability, laden/unladen	%	30/20	30/20
	5.6	Service Brake		Hydraulic	Hydraulic
	5.7	Parking Brake		Mechanical	Mechanical
Combustion Engine	6.1	Engine Manufacturer/Type		GCT GK25	GCT GK25
	6.2	Engine Power	hp (kW)	61.4 (45.8)	61.4 (45.8)
	6.3	Rated Speed	r/min	2700	2700
	6.4	Number of Cylinders/Displacement	(-)/(cm ³)	4/2488	4/2488
	6.5	Generator	V	12	12
	6.6	Vehicle Electrical System Voltage	V	12	12
	6.7	Battery Voltage/Nominal Capacity	V/Ah	12/60	12/60
	6.8	Rated Torque	N·m/r/min	187/1600	187/1600
	6.9	Transmissions Manufacturer		Hangcha	Hangcha
	6.10	Transmissions Type		Powershift	Powershift
	6.11	Stage FWD/RVS		1/1	1/1
Additional Data	7.1	Operating Pressure for Attachments	psi (MPa)	2538(17.5)	2538(17.5)
	7.2	Hydraulic Tank - Capacity (drain & refill)	gal (liter)	11(42)	11(42)
	7.3	Fuel Tank Capacity	gal (liter)	NA	NA